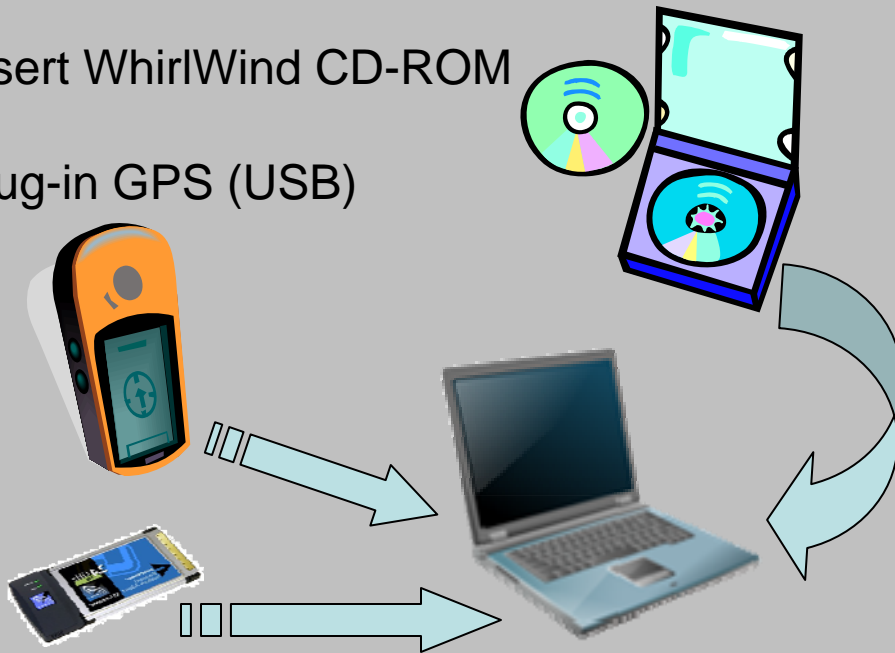


1. Insert WhirlWind CD-ROM

2. Plug-in GPS (USB)



3. Insert WiFi card  
(USB or PCMCIA)

4. Power on system



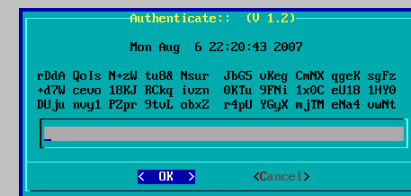
5. WhirlWind boot screen



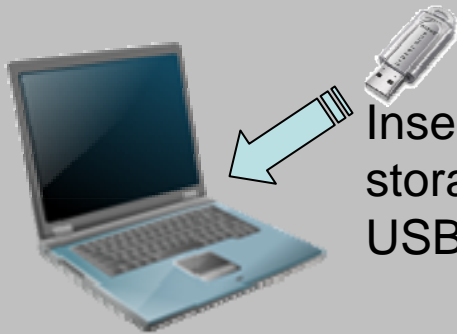
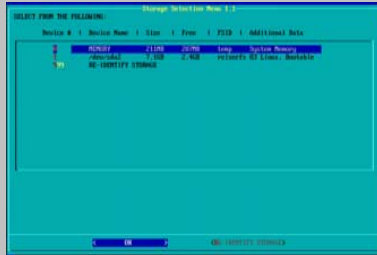
6. WhirlWind user agreement



7. WhirlWind authentication

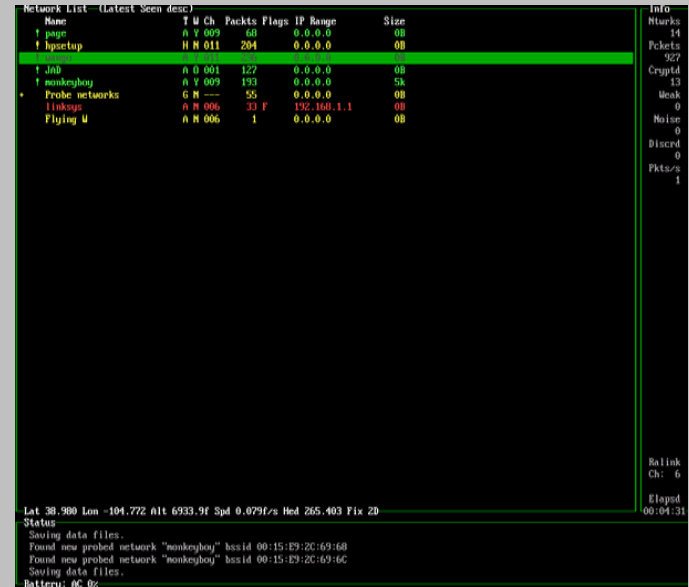


## 8. Storage selection



Insert optional storage device  
USB, Firewire, etc.

## 10. Collection begins



## 9. WiFi device selection



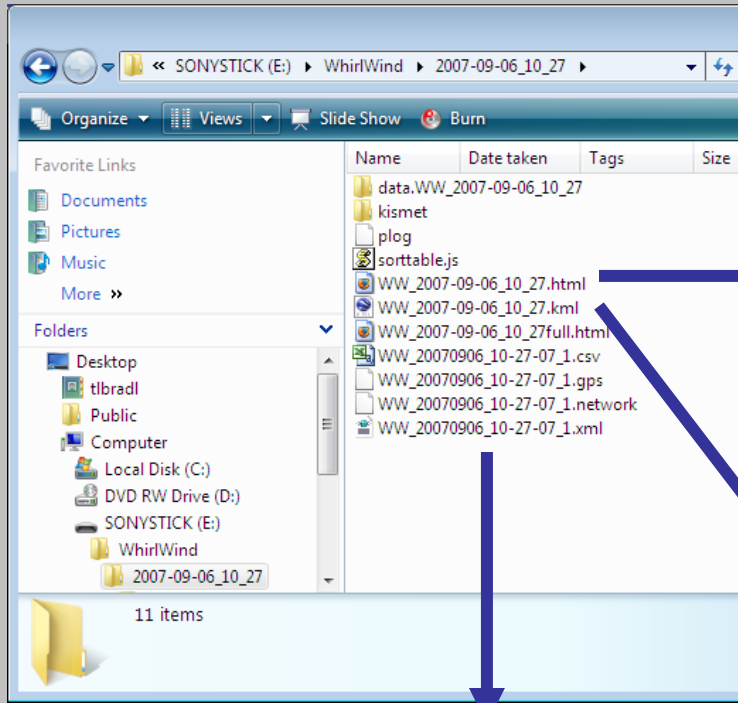
## 11. Shift + Q to stop collection ...

CTRL + ALT + DEL to shutdown



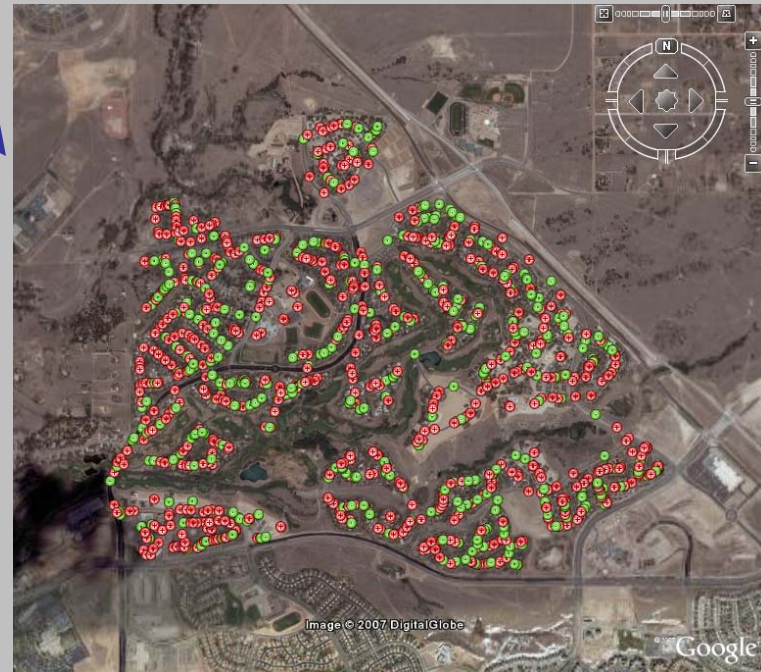
# 10. WhirlWind output files

WW\_200x-xx-xx\_XX\_XX.html



| ESSID             | BSSID             | Encryption   | Channel | IP Address |
|-------------------|-------------------|--------------|---------|------------|
| 2WIRE215          | 00:18:3F:46:26:B9 | WEP          | 6       | 0.0.0.0    |
| 2WIRE001          | 00:18:3F:6D:FC:49 | WEP          | 6       | 0.0.0.0    |
| linksys_SES_36707 | 00:14:BF:84:B9:CD | WEP          | 6       | 0.0.0.0    |
| Frank             | 00:14:6C:4A:A0:98 | None         | 11      | 0.0.0.0    |
| ACTIONTEC         | 00:15:05:28:0B:C7 | WEP          | 9       | 0.0.0.0    |
| ACTIONTEC         | 00:0F:B3:B2:33:DD | WEP          | 9       | 0.0.0.0    |
| MTMasive          | 00:18:3F:21:B3:C9 | WEP          | 7       | 0.0.0.0    |
| linksys           | 00:14:A5:3A:32:D4 | None         | 0       | 0.0.0.0    |
| HCL_Wireless      | 00:16:B6:4F:77:C7 | WEP          | 11      | 0.0.0.0    |
| ANGEL             | 00:0F:B5:4E:CC:35 | None         | 0       | 0.0.0.0    |
| ACTIONTEC         | 00:0F:B3:1C:F8:FF | WEP          | 9       | 0.0.0.0    |
| Motorola          | 00:14:A5:88:57:95 | None         | 1       | 0.0.0.0    |
| no ssid           | 00:14:BF:04:93:0E | WEP          | 7       | 0.0.0.0    |
| ACTIONTEC         | 00:0F:B3:38:FB:15 | WEP          | 9       | 0.0.0.0    |
| 2WIRE157          | 00:18:3F:1C:5A:21 | WEP          | 6       | 0.0.0.0    |
| no ssid           | 00:0C:41:AC:43:94 | None         | 6       | 0.0.0.0    |
| Sunshine          | 00:14:BF:72:CD:94 | WEP,TKIP,WPA | 11      | 0.0.0.0    |
| ACTIONTEC         | 00:15:05:23:DF:67 | WEP          | 9       | 0.0.0.0    |
| 2WIRE381          | 00:18:3F:63:09:91 | WEP          | 6       | 0.0.0.0    |

WW\_200x-xx-xx\_XX\_XX.kml



WW\_200x-xx-xx\_XX\_XX.xml

```

<?xml version="1.0" encoding="ISO-8859-1" ?>
<!DOCTYPE detection-run (View Source for full doctype...)>
<cdetection-run kismet-version="2007.01.R1" start-time="Thu Sep 6
10:27:07 2007" end-time="Thu Sep 6 10:27:50 2007">
  <wireless-network number="1" type="Infrastructure" wep="true"
  cloaked="false" first-time="Thu Sep 6 10:27:07 2007" last-
  time="Thu Sep 6 10:27:48 2007">
    <ssid>peaknet</ssid>
    <bssid>00:18:39:72:ED:D1</bssid>
    <channel>6</channel>
    <maxrate>54.0</maxrate>
    <maxseenrate>0</maxseenrate>
    <encryption>WEP</encryption>
    <encryption>WPA</encryption>
    <encryption>PSK</encryption>
    <encryption>AES-CCM</encryption>
  </packets>
  <llc>20</llc>
  <data>0</data>
  <crypt>0</crypt>
  <weak>0</weak>
  <dupeiv>0</dupeiv>
  <total>20</total>
</packets>
<datasize>0</datasize>
  
```